

Community Profile – Treorchy, Ynyswen and Cwmparc

Overview

Treorchy is a town and electoral ward in the county borough of Rhondda Cynon Taf in the Rhondda Fawr valley. Treorchy is one of the 16 communities that make up the Rhondda. Treorchy is bordered by the villages of Cwmparc and Ynyswen which are included within the profile. The population is 7,694, 4,404 of which are working age.

Treorchy has a thriving high street that won Champion High Street of the UK in 2019, a Chamber of Trade and is now a Business Improvement District with many independent shops and cafes. There are 2 supermarkets and an industrial estate providing local employment. There is also a High school with sixth form opportunities for young people in the area

Cwmparc is a village and district of the community of Treorchy, 0.8 miles from Treorchy. It is more of a residential area, however St Georges Church Hall located in Cwmparc offers a variety of activities for the community, including Yoga, playgroup and history classes.

Ynyswen is a village in the community of Treorchy, 0.6 miles north of Treorchy. It consists mostly of housing but has an industrial estate which was once the site of the Burberry's factory, one shop and the Forest View Medical Centre.

Treorchy has a vibrant atmosphere, offering many activities and services locally. There are green spaces as well as employment opportunities and retail available.



Section 1 - Community Groups, Activity + Key Buildings

| Ynyswen | | | |
|---|---|--|---|
| Community Building | Activities they run | Other groups based there | Other Groups with no physical base |
| The Play Yard https://www.facebook.com/ThePlayYardRCT/ | During Covid 19 Pandemic: packed lunch for children Birthday Parties catered for Indoor soft play activities 3G Sports Pitch: Indoor soccer, indoor Rugby and other training A space for local Groups to meet Sensory area Cafe | Informal Group of ladies recovering from Cancer <ul style="list-style-type: none"> Next to the Play Yard: Tip Tops Dance & Fitness studio – dance for 3+ years, adults' classes also available in building. | Rhondda Netball Groups are based in the local Schools. |
| Ynyswen Welfare Hall | Short mat bowls / dog training class | Dog Training Class | |
| Cwm Farm Shop | Quiz nights | <ul style="list-style-type: none"> Evening Strollers (walking group that meet at Cwm Farm Shop) Y Sgwrs (Welsh language practice friendship group that meet at Cwm farm Shop) | |
| Forest View Practice Allotments | Grow Rhondda Gardening Group (alongside Forest View Surgery) | | |
| Cwmparc | | | |
| Community Building | Activities they run | Other groups based there | Other Groups with no physical base |
| Cwmparc Community Association and Family Hub | Community café / gym / computer classes and lots more: www.cwmparccommunityassociation.webs.com | -Tai Chi / Kettlebells / Kickboxing / Walking Group / Mobility Group - South Wales Community Mountain Rangers have a base in Cwmparc Hall (SWCMR). | - Cwmparc Blitz memorial |

| | Cwmparc Family Hub (previously Alison House now managed by Cwmparc Community Organisation) | | |
|-------------------------------|---|---|--|
| St George's Church Hall | Anglican Church Services | -OAP Group Cwmparc -Scouts -Card making Tuesdays 1.30pm - Gospel Hall youth & bowls | |
| Tremains Hotel | Darts /Pool / Walking Group and Quiz Night | | |
| Treorchy | | | |
| Community Building | Activities they run | Other groups based there | Other Groups with no physical base |
| St Matthew's Church Hall | Pen Rhondda Support Group Mothers Union | - Treorchy WI Choir - Brownies and Guides meet twice a week | <ul style="list-style-type: none"> - Social Strollers (meet at High Street Social) - RCT Women's Aid - SMT Rhondda Re-Connect Project (A befriending Volunteer led project). - Rhondda Pride (going through re-brand) - Treorchy Our Community - Friends of Treorchy Park - RAFT Rhondda Arts Festival: https://www.facebook.com/raftwales/ |
| Oak Tree Hall | Available for rent Oak Tree Hall Committee | <ul style="list-style-type: none"> - Faith, Hope and Harmony Ladies Choir - Rhondda 50+ Forum - Treorchy Senior Citizens Club - Weight Watchers - Players Anonymous host plays here | |
| Parc and Dare Brass Band Hall | Parc and Dare Brass Band | | |
| Capel Hermon, Treorci | Hermon Welsh Independent Chapel Services | - Aelwyd Cwm Rhondda (Welsh language choir) https://www.facebook.com/aelwydcwmrhondda/?ref=page_internal | |
| Treorchy Library CF42 6UD | Order and collect service currently running through the Pandemic Si-Fi Reading Group General Reading Group -Digital Audio Book Library | <ul style="list-style-type: none"> - Treorci Library Youth Centre - Treorchy Library Toddler Group and Story Time - History classes - IT classes - E-teens Centre: After School Club, Movie Night and more | |

| | | | |
|--|---|--|--|
| | <ul style="list-style-type: none"> -Public PC's with Internet access -DVD Library -Music collection -Microfilm/microfiche reader -Reference and Local Studies library focussing on The Rhondda -Dedicated Teenage Library - Black and white/colour printer - Photocopier, Scanner and Laminator Service - CD and Memory Sticks on sale - Community Meeting Rooms for hire | <ul style="list-style-type: none"> - Library provides room to host: RCT CBC Benefits Support drop ins / Citizens Advice drop ins - MIND Counselling - Communities for Work - No Smoking Group - Welsh Classes - Ti a fi, Welsh Toddler Group - Councillor's Surgery - 50+ Form Tablet Class - Crochet Class - Essential Skills - Job Club - Graphic Novels Group - Welsh for Parents - HMRC (Tax) - Digital Fridays | |
| Parc and Dare Theatre | This inspiring building dominates the skyline of Treorchy. Its programme of events includes music, comedy, drama and community events. Digital 3D cinema screenings are also an essential part of the programme | <ul style="list-style-type: none"> - Rhondda Model Railway Club - Selsig Amateur Dramatic Society's Concerts frequently take place at Parc and Dare Theatre. - | |
| Treorchy and Cwmparc Boys and Girls Club CF42 6UA | Treorchy Boys & Girls Club Project 42- Tue/wed/Thurs 11-2 16-25-year olds / Football Clubs / Pool Clubs / Community Fetes | <ul style="list-style-type: none"> - Rhondda Radio - Friends of Treorchy Park - Cardiff City FC | |
| Treorchy RFC Clubhouse CF42 6PN | <p>Treorchy Rugby Union Club nickname The Zebras</p> <p>Strong 1st team / girls and youth teams / Rugby Club open three nights per week as licenced venue Gym for Club members</p> | <ul style="list-style-type: none"> - Treorchy Jazz Band | |

| | | | |
|--------------------------------------|--|---|--|
| | The Clubhouse has been refurbished and is available to hire for events. | | |
| Abergorki Community Hall CF42 6DB | Abergorki Hall Committee | <ul style="list-style-type: none"> - Shin-Ki-Ho Classes: Monday 10:30am- 11:30am Thursday 11am – 12 noon - Open access gym with 390 members open all day every day - Ystradyfodwg Arts Club has permanent base here and open all day every day) - Karate classes (twice per week) | |
| Ystradfechan Bowls Clubhouse | Private Bowls Green in the Rhondda. Major sporting events shown on four screens, both terrestrial and satellite Quiz night every Thursday. Men and ladies darts teams play out of the club. | <ul style="list-style-type: none"> - Rhondda Chess Club | |
| Pengelli Bowls Clubhouse | Bowling Group and Committee | | |
| Caemawr Allotment | Allotment users | <ul style="list-style-type: none"> - Men's Sheds/Rhondda Society | |
| Rhondda Tunnel Society Shop | Rhondda Tunnel Society Shop sell items to raise money for their campaigns/marketing. | | |
| Ystradfechan Fields | <ul style="list-style-type: none"> - Rhondda Cricket Club for Adults and All Stars and Dynamos for children - Rhondda Lawn Tennis Club CIO - Ystradfechan Paddling Pool Group | | |
| Treorchy Primary School | Primary School | <ul style="list-style-type: none"> - Treorchy Male Voice Choir (looking for new base). - Selsig Amateur Dramatic Society - Dylan's Den Child Care | |
| Ysbyty George Thomas | Hospital Armchair Warriors Group | <ul style="list-style-type: none"> - Rhondda Civic Society | |

| | | | |
|----------------------------|--|--|--|
| toogoodtowaste | <ul style="list-style-type: none"> - Community Rooms to rent - Show rooms: Furniture and items to buy - Home collections of unwanted items - House Clearance - Volunteering opportunities | | |
| Dragon Savers Credit Union | <ul style="list-style-type: none"> - Credit Union: for Community Group Accounts and Resident Accounts | | |
| | | | |

Deprivation Ranking - WIMD 2014 (where 1 is most deprived and 1909 is least)

WIMD 2014 (where 1 is most deprived and 1909 is least)

| WIMD | Income | Employment | Health | Education | Access to Services | Community Safety | Physical Environment | Housing |
|------------|--------|------------|--------|---|--------------------|---|----------------------|-------------|
| 952 | 905 | 624 | 970 | 1,235 | 1,450 | 472 | 380 | 1,620 |
| 600 | 601 | 435 | 232 | 1,127 | 1,609 | 1,022 | 349 | 1,305 |
| 367 | 464 | 294 | 184 | 763 | 378 | 486 | 1,584 | 574 |
| 608 | 452 | 455 | 588 | 674 | 1,469 | 1,010 | 886 | 764 |
| 860 | 743 | 630 | 930 | 1,026 | 1,854 | 985 | 170 | 1,222 |
| | | | | UK Office of National Statistics, 2011 Census | | Estimated 2020 | | 2021 |
| Population | | | | 7680 0-17 years 1380 18-64 years 4570 65+ years 1730 | | 7691 https://www.citypopulation.de/php/uk-wales.php?cityid=W38000056 | | |

| | Welsh Average | 2019 | 2021 |
|------------------------------|--|---|------|
| Children in poverty | 20% of children live in poverty | 25% | |
| Central heating | 2% of households have no central heating | 2% | |
| Crime Rates | Overall crime rate is lower than Welsh average. There were 646 reported crimes between 2018 and 2019, 90.7 per 1000 population | | |
| Illness | 23% of people have a life limiting illness | 29% | |
| Qualifications | 26% of people across Wales have no qualifications | 34% | |
| Car ownership | 23% of people across Wales have no access to a car | 30% | |
| Ethnicity | 93% of people in Wales are White British | 97.9% | |
| Born in Wales | 72.7% of people were born in Wales | 90.2% | |
| Welsh language | 75% of population cannot speak Welsh with only 14.5% able to speak and write Welsh | | |
| Benefits | Of people out of work, 18.9% are receiving workless benefits and 5.1% people are receiving looking for work benefits. There are around 270 people claiming Universal Credit. | | |
| Deprivation Rate | 3006 people are living in the most deprived 20% of areas in Wales, so 39.2% of the population | | |
| Out of work households | 17.8% of children live in out of work households | 23.2% | |
| Living in poverty | 20% of people are classed as living in poverty | 26.5% | |
| Average household income | | £22,600 | |
| Unpaid care | | There are 1059 people providing unpaid care (13.8%) | |
| Air Quality and Green Spaces | 41% of population live in flood risk area | The air quality score is 25% better than Welsh average and have access to green | |

| | | | |
|----------------------|--|--|--|
| | | space and public parks and gardens more readily than Welsh average. 82.3% of population live in flood risk area | |
| Mental Health | | 7.8% of population are receiving mental health benefits (275 people) this does not consider diagnosed mental health conditions who do not receive benefits / 21% of population have GP recognised mental health condition. | |
| Debt | | Personal debt and residential mortgage debt per head are significantly lower than Welsh average | |

| | | | | | |
|----------|---------------------------------------|--|----------|-------------------------|---|
| 2 | Employment & Local Economy | <p>60.1% of population are economically active, only a little lower than the 65.8% Welsh average, with 34.6% employed full time, 13.1% employed part time and 5.7% self-employed (around 314 people).</p> <p>The largest employment sector is health and social care 17% of the 3045 people in employment), then manufacturing 16% of the 3045 people in employment and then retail 13% of the 3045 people in employment.</p> <p>Roughly 1/3 of working population work in the Rhondda Valleys with 2/3 travelling to Cardiff, Pontypridd and over the Rhigos to Neath, Swansea and Cynon valleys.</p> <p>UK Office of National Statistics, (Census, 2011)</p> <p>In the area, there are on average 16.24 claimants per job, significantly higher than the 3.86 Welsh average and the jobs available in area are in the majority, manufacturing, education and health.</p> | 3 | Health Provision | <p>In area Treorchy 2 x GP surgeries (one in Treorchy and one in Ynyswen). 3 Chemists.</p> <p>Closest hospitals Royal Glamorgan 10.4 miles (with A&E) Ysbyty Cwm Rhondda – 2.7 miles (with Minor Injuries Unit)</p> <p>Dentists and opticians The nearest dentists and opticians are in Treorchy</p> <p>Ysbyty George Thomas – specialist elderly care unit / Men's Shed base</p> <p>32% of people have a limiting long-term illness in Treherbert compared with 23% across Wales (Census, 2011). The average life expectancy is 76 compared to 77 across RCT and 78 across Wales.</p> |
|----------|---------------------------------------|--|----------|-------------------------|---|

| | | | | | |
|---|-----------------------|---|---|--|--|
| | | <p>Of people out of work, 13.9% are receiving workless benefits and 3.7% people are receiving looking for work benefits. There are around 240 people claiming Universal Credit.</p> <p>Blyton and Jenkins (2010) analysed the economy in the community of Treorchy and suggested that the area had been normalised to redundancy due to the closure or movement of manufacturing. There is an industrial estate in Treorchy where many businesses are still very active and do provide employment opportunities for around 400 people.</p> <p>Treorchy also has a thriving high street where 82% of businesses are owned by local people.</p> | | | <p>Healthy life expectancy is 63 compared with 68 Welsh average.</p> <p>39.2% of the population are living in health deprivation hotspots compared with 19.3% Welsh average and 29.3% of population have limiting long-term illness compared to 22.7% Welsh average.</p> |
| | | | | | |
| 4 | Transport Connections | | <p>29.9% of households (960) have no car compared with 23% across Wales (Census, 2011) – and 36.5% of pensioner households have no vehicle, however there are excellent bus and train links. Interestingly 20.6% of households have 2 cars and 5.6% of households have 3 or 4 cars.</p> <p>However, the travel time to key services (walking or public transport) are significantly lower than Welsh average across most categories and so population has good access to key services.</p> <p>Travel Times to Key Services</p> <p>Post Office – 11 mins</p> <p>Library – 14.5 mins</p> <p>GP – 14.1 mins</p> <p>Pharmacy – 10.1 mins</p> <p>Primary School – 10 mins</p> <p>Secondary School – 16.8 mins</p> <p>Food Shop – 8.4 mins</p> <p>Leisure Centre – 52.3 mins</p> | | |

| | | |
|---|--|---|
| | | <p>Roads</p> <p>The A4061 over the Bwlch y Clawdd Pass leads to Bridgend, via the Ogmore Vale, and to Maesteg and Port Talbot. Within the Rhondda Fawr Valley, the A4061 runs northwards to the top of the valley at Treherbert and ultimately, Hirwaun. The route on the A4058 southwards follows the valley's course to Llwynypia, Tonypany, Porth and Pontypridd to join the A470 for Cardiff.</p> <p>Rail</p> <p>Treorchy railway station is located on the Rhondda Line, with regular services to Treherbert and Cardiff Central run by Transport for Wales. Ynyswen railway station is located on Ynyswen Industrial estate. There are trains every 30 minutes, 7 days a week. You can leave Cardiff at 10.30pm and still get home via train and / or bus easily to Treorchy or Ynyswen, all villages at the top of the Rhondda are served well by public transport.</p> <p>You can arrive at Treorci Train station from Cardiff as late as 11.15pm.</p> <p>Buses</p> <p>Cwmparc</p> <p>139 stagecoach bus runs just between Cwmparc and Treorchy, the first bus departs Cwmparc Terminus at 7.39 and there is one every 40 minutes, the last bus departing Cwmparc Terminus is 19.09 – there is no Sunday service. Buses will stop along route wherever people want.</p> <p>Closest train is Treorchy 1.5 miles away</p> <p>Treorchy</p> <p>A bus service runs every 15 minutes through Treorchy and travels all the way to the top of Blaencwm and Blaenrhondda. Service runs from 6 am to 11pm. Treorchy is served by buses operated by Stagecoach running to Blaenrhondda, Blaencwm, Treherbert, Tonypany, Porth, Pontypridd and Caerphilly.</p> |
| 5 | Schools – primary, secondary, Welsh, special needs, nurseries (including Cylchoedd Meithrin), childcare providers – number of pupils in each, current Estyn ratings. | <p>3 schools in area (primary)</p> <p>1 secondary schools in area</p> <p>Average travel time to secondary school = 21 minutes</p> <p>Average travel time to primary school = 3 minutes</p> <p>432 school places</p> <p>In area</p> <ul style="list-style-type: none"> Treorchy Primary School – Estyn rating (2014) – Good / 311 pupils, 54 of which are in nursery. |

| | |
|--|---|
| | <ul style="list-style-type: none"> • Treorchy Comprehensive - Estyn Rating (2016) – Good 1700 pupils, 200 of which are in sixth form. The nearest English Language Comprehensive School is Treorchy Comprehensive – a max distance of 4 miles with school buses and trains for transport. • Ysgol Gyfun Ynyswen - Estyn Rating (2013) – Adequate (1 mile out of Treherbert district) 273 pupils 40 of which are nursery age. • Parc Primary School <p>Closest Welsh Language Schools</p> <ul style="list-style-type: none"> • In area (see above) • The closest Welsh Secondary School - Ysgol Gyfun Cwm Rhondda – (6.6 miles) <p>Closest English Language Secondary School</p> <ul style="list-style-type: none"> • In area (see above) <p>Closest Special educational school</p> <ul style="list-style-type: none"> • Ysgol Hen Felin, Ystrad (aged 3-18) – 1.67 miles from Treorchy <p>Closest Childcare providers</p> <ul style="list-style-type: none"> • Heavenly day Nursery Treorchy – places for 34 children, open from 7.30am – 6.00pm mon-fri. • Rhondda Kindercare • Dylan's Den (based in Treorchy Junior school) wrap around and breakfast and afterschool. • Fern Partnership Childcare in Cwmparc Junior School <p>Can find childminders through care.com website, there are 3 childminding services located in Treorchy, details of childminder are given once an account has been set up. https://www.care.com/en-gb/join-now?verticalId=childCare</p> <p>There is no Flying Start provision in this area.</p> <p>Treorchy has a larger than the Welsh average number of residents with no qualifications, 41% of Census (2011) respondents fell into this category.</p> |
|--|---|

| | | |
|--|--|--|
| | | <p>34.1% of people have no qualifications compared with 26% across Wales, (Census, 2011) and 65.3% of 18-19-year olds are not in Higher education though this is the same as the national average.</p> <p>Cylch Meithryn Nant Dyrys is registered in Ynyswen – Charity number: 1055822</p> |
|--|--|--|

| | | | | | |
|----------|-----------------|---|----------|--|--|
| 6 | Politics | <ul style="list-style-type: none"> • Cllr Emyr Webster – Plaid Cymru / Cllr Alison Chapman – Plaid Cymru / Cllr Sêra Evans • MS – Buffy Williams – Welsh Labour • MP – Chris Bryant – Welsh Labour • Council – RCT CBC – Labour <p>Town / Community Council – None</p> | 7 | Derelict buildings and areas of land that are problematic or affect people's view of the community? | |
| 8 | Housing | <p>Make up of properties:</p> <ul style="list-style-type: none"> • Detached – 264 (7.3%) Welsh average = 27.7% • Semi Detached – 303 (8.4%) Welsh average = 31% • Terraced – 2887 (79.8%) Welsh average = 27.8% • Purpose Built Flats – 86 (2.4%) Welsh average = 9.6% • Flats in converted houses or buildings – 78 (2.2%) Welsh average = 2.4% <p>There are a few purpose-built retirement blocks.</p> <ul style="list-style-type: none"> • Owner occupied – 2572 (76.5%) Welsh average = 67.8% • Social rented – 245 (7.3%) Welsh average = 16.5% • Private rented – 545 (16.2%) Welsh average = 15.8% <p>Properties in Treorchy had an overall average price of £107,731 over the last year.</p> <p>The majority of sales in Treorchy during the last year were terraced properties, selling for an average price of £100,644. Semi-detached properties sold for an average of £114,306, with detached properties fetching £240,875.</p> <p>Overall, sold prices in Treorchy over the last year were 11% up on the previous year and 12% up on the 2018 peak of £95,896.</p> <ul style="list-style-type: none"> • Trivallis and Rhondda Housing Association are the social landlords serving the area. • There are 2 nursing homes though one is under threat of closure. | | | |

| | | | | | |
|---|---|---|----|---------|--|
| | | <p>Households are made up as follows:</p> <ul style="list-style-type: none"> • Pensioner – 865 (25.7% compared to 22.9% Welsh average) • One person – 565 (16.8% compared to 17.1% Welsh average) • Lone Parent with dependent children – 310 (33.8% compared to 26.8% Welsh average) • Married – 1035 (30.8% compared to 32.8% Welsh average) • Cohabiting – 290 (8.7% compared to 9.7% Welsh average) • Married – 715 (27.8% compared to 32.8% Welsh average) | | | |
| 9 | Places of worship (description, denomination, how buildings used) | <p>39.7% identify as having no religion compared with 32% Welsh average. 52% of remaining people (3,980) identify as Christian. Interestingly the remainder identify as a mixture of Buddhist, Hindu, Jewish and Muslim which is a wider representation than other village sin the Rhondda.</p> <p>Cwmparc</p> <ul style="list-style-type: none"> • Saint George's Parish Church - Wed 2pm fortnightly older person group meet / Card making Tuesdays 1.30pm / Gospel Hall youth & bowls <p>Treorchy</p> <ul style="list-style-type: none"> • St Matthews Church and Church Hall – Regular Church services and weddings and funerals – Also host Treorchy Women’s Institute (meet the last Thursday in the month in the afternoon) / Treorchy WI Choir (meet 1st Thursday of every month) / Brownies (meet there once a week). Carers Support Group – Pen Rhondda Support Group. • Bethlehem (Welsh Methodist) - coffee mornings most Tuesdays / Mothers Union / Rhondda Kindercare business based here. • Gospel Hall – Station Road • Hermon Chapel (Welsh Language) – Aelwyd Cwm Rhondda based here • Gosen (Methodist) – Regular Sunday and Chapel Youth services – Also host coffee mornings every Tuesday | 10 | Tourism | Treorchy– See ‘Visit Treorchy’ website |

| | | | | | |
|----|-----------------------------------|---|--|--|--|
| | | Ynywen None | | | |
| 11 | Local businesses & shops | Cwmparc 2x General Grocery Stores 1x Takeaway 1X Chemist 1x Community Café and Sunday Dinner service (based in Cwmparc Community Hall) Treorchy – See ‘ Visit Treorchy ’ website. Many businesses and an active Chamber of Trade – a real community high street – interestingly 77% of shops are independent and owned and run by local people. | | Ynyswen 1 General Store (currently not open following fire) 1 Takeaway On Ynyswen Ind Estate as well as manufacturing there is now also The Play Yard inc café / Cwm farm Shop, and the Big Cwtch charity store. There are also two large Industrial Estates either end of Treorchy offering a large number of manufacturing jobs in factories making windows / kitchens / IT components / Peacocks / NHS Food Centre etc. They also offer many services such as mechanics / caravan sales / gas sales / car body work etc. | |
| 12 | Leisure premises, pubs, clubs etc | Cwmparc <ul style="list-style-type: none"> • The Tremains (pool / darts / bingo / quiz night and walking group) • Parc Hotel • The Pencelli Hotel – (real ale pub with regular entertainment nights) • Cwmparc Legion Treorchy <ul style="list-style-type: none"> • Treorchy Businessmen’s Club - Saturday evenings social / chat / bingo / Singing and jokes Friendship group • The Prince Hotel (serves food and hosts entertainment and quiz nights) • The Stag Hotel – destination for pool / snooker • The Lion Hotel – serves food / in house DJ / regular entertainment / Comedy Club once per month / actively links with schools to run excellence in performance project • The RAFA Club (Royal Airforce Club) – members only open 4 nights per week • The White Dragon – open 5 days per week / room hire for baby showers and afternoon teas • The Treorchy Hotel – open 6 days per week • Cardiff Arms Bistro Hotel and café Bar • Treorchy RFC – open as licenced premises 3 days per week and is often hired for functions • Ystradfechan Bowls Club – licenced premises open to members twice per week | | | |

| | | |
|-----------|---|--|
| | | <p>Ynyswen None</p> <p>For more information on activities based in all these buildings, see Section 1</p> |
| 13 | External services brought into the area. | <ul style="list-style-type: none"> • External organisations delivering dance and theatre e.g. RSD. • Weight watchers • Girl guides • Cardiff City FC • Credit Union • RCT Women's Aid • SMT Rhondda Re-Connect Project (A befriending Volunteer led project). |
| 14 | What's likely to come up? What might change? | <p>Treorchy and Cwmparc Boys and Girls club are looking for funding to finish rooms upstairs in the building to incorporate fitness classes and arts and crafts and have applied for £8000 from the Treorchy wind farm fund.</p> <ul style="list-style-type: none"> • At Meet & Greet in Treorchy 2020 several residents indicated an interest in: • Treorchy developing: Skate park / Basketball Court • Cwmparc: New seating for Walkers on the Parc Pit Reclaimed Land • Cwmparc: Tourism Make Bike Trails • Ynyswen: Further Employment on old Burberry's site • There is no Sunday bus service in Cwmparc. • Treorchy has a variety of shops but not many community facilities. • There is one residential care home based in Treorchy • Many local footpaths are not signposted, particularly in Cwmparc • There is a desire to see and an environmental group to look at issues and encourage wildlife back in the area. <p>Discussions are taking place about creating a dedicated Dog Walking area in Ystradfechan Fields Rhondda Lawn Tennis CIO are developing their facilities to grow membership and update their Club House, Tennis Courts and fencing.</p> <p>Ystradfechan Fields Development Group are carrying out their second Consultation to gauge the Communities interest in a Café Area, Changing Rooms and more!</p> |

| | | |
|----|--|---|
| 15 | Greenspaces Parks & green spaces (and Green Flag Awards where applicable) Footpaths and Active Travel networks Sports facilities & Clubs Playgrounds Playing fields Heritage sites Allotments | Ystradfechan Playing Fields CF42 6HL Best walking routes in Treorchy: https://my.viewranger.com/places/gb/treorchy-walks |
| 16 | Other Community Facilities (including postcodes) Include: Pharmacies Libraries Petrol stations | Pharmacies are listed in 'Shops'. There is a large active Library (including Youth Library and e-teen centre. There are no petrol stations, the closest is in Pentre 1.5 miles away) Cwmparc <ul style="list-style-type: none"> Cwmparc has a Church / Church Hall / Parc Hall (multi use building) and new Cwmparc family hub (CF42 6LD) which has recently re opened under new management, and offers Junior club, after school, Monday to Friday and currently has 3 evenings a week running Youth provision in the area. The hub also has a range of daytime activities being planned, some of which have already started. |

- There is one small play park in Cwmparc but lots of green space and mountain walking though no routes are marked walking routes.
- Cwmparc Hall CF42 6LD - Tai chi / Open access Gym / Community Café / Bingo / IT Room / Cory Band are permanently based here for practice / external organisations sometimes deliver dance and theatre classes here

Treorchy

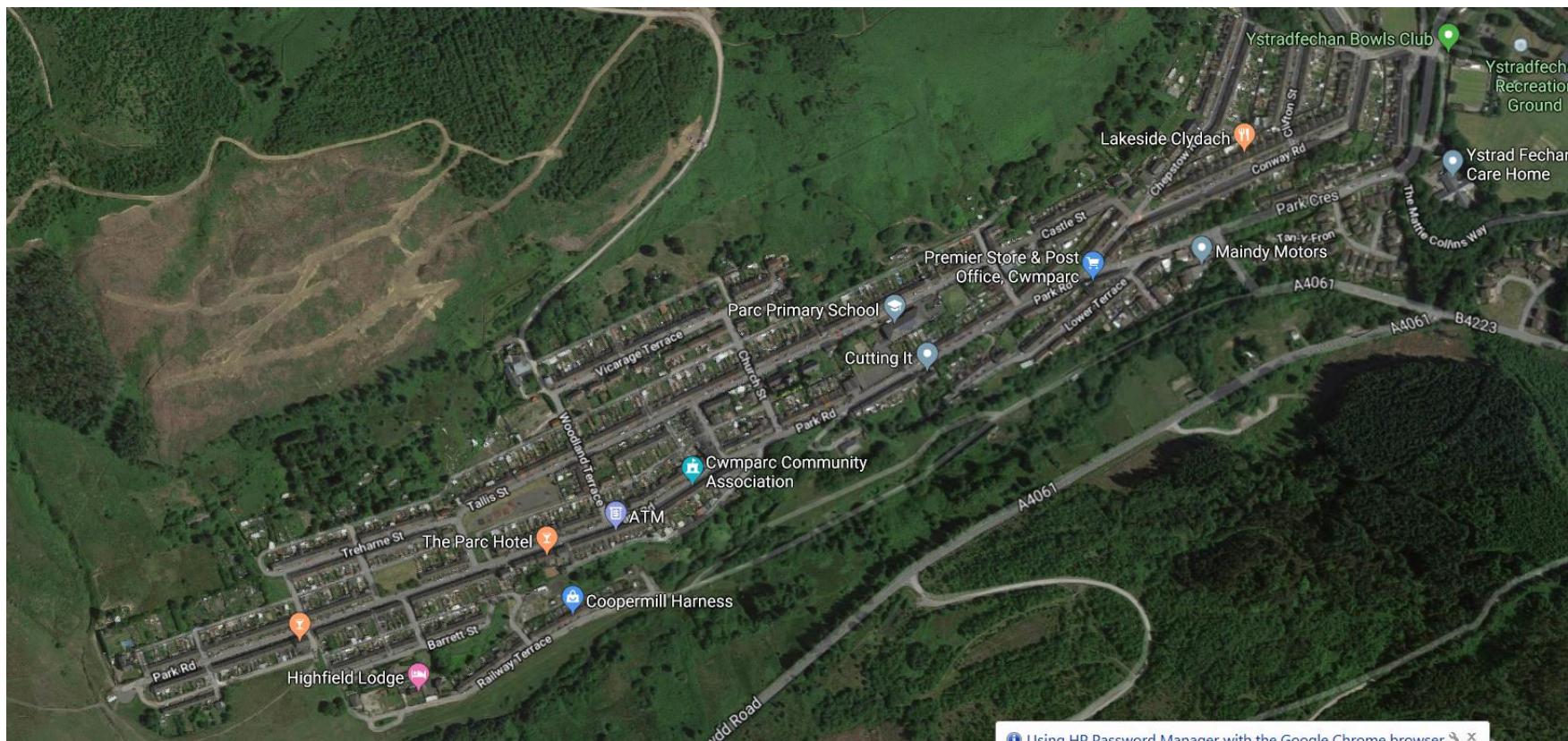
- Parc & Dare Hall CF42 6NL
- Treorchy RFC CF42 6PN – Rugby Union Club nicknamed the Zebras / Strong 1st team / girls and youth teams / Rugby Club open three nights per week as licenced venue / gym for Club members
- Treorchy District Professional & Business Club CF42 6NU – activities and groups for members
- Oak Tree Hall CF42 6TD - Treorchy Senior Citizens Club (every other Thursday 2-4pm / Yoga 7-8.30pm / Treorchy OAP choir every Friday 7pm / Weight Watchers / Polling Station)
- St Matthew’s Church Hall CF42 6TD – Dementia Group (meets once a week) / Brownies and Guides (meets twice per week)
- Abergorki Hall CF42 6DB - Shin-Ki-Ho Classes: Monday 10:30am- 11:30am Thursday 11am – 12 noon / Open access gym with 390 members open all day every day / Ystradyfodwg Arts Club has permanent base here and open all day every day) / Karate classes (twice per week)
- Library CF42 6UD - history classes / IT classes / e-teen centre who host groups like People and Work / baby and toddler classes / RCT CBC Benefits Support drop ins / Citizens Advice drop ins
- Treorchy Boys & Girls Club CF42 6UA - Rhondda Radio / Project 42- Tue/wed/Thurs 11-2 16-25-year olds / Football Clubs / Pool Clubs / Community Fetes / Cardiff City FC
- Ystradfechan Bowls Club CF42 6HL – bowls club with two teams and own licenced clubhouse
- Pengelli Pensioners Bowls Club – CF42 6HL – “People join us for friendship, social activity to keep your mind and body active” - Men’s team- Monday afternoon from 2-4pm, Thursday evening from 6 – 8:30, Saturday 2-5pm / Women’s group meet – Monday evening from 6:00 – 8:30, Thursday afternoon 2pm- 6pm / Mixed sex team – meet Wednesday 2:30 – 6pm - this group also meets afterwards for a meal at the private owned Ystradfechan Club opposite.
- Treorchy has one main park CF42 6HL / green space with play area / bowls / Paddling pool / tennis courts and cricket field
- Treorchy Junior School – Dylan’s Den Childcare / Selsig Amateur Dramatic Society meet twice per week all year / Treorchy Male Voice Choir meet once a week all year
- Dragon Savers Credit Union, 107 Bute Street, Treorchy.
- Toogoodtowaste

| | | |
|----|--|--|
| | | <p>Ynyswen</p> <ul style="list-style-type: none"> • Ynyswen has small play area behind The Coffin • Allotment behind Ynysfeio Avenue • Ynyswen Welfare Hall CF42 6EB (known as the Coffin) – gardening club / dog training / space for hire / Line Dancing / Dog Training / Indoor Bowling / Gardening Club |
| 17 | <p>Leisure facilities and activities specifically for Children & Young People</p> | <p>Ynyswen</p> <ul style="list-style-type: none"> • Ynyswen Welfare Hall- RSD- Dance & Gym – Street, freestyle, Latin (Friday, 4-16 years, 5.30pm – 6.30pm, £4.00 per class), Street dance (Tuesday, 5-16 years, 5.30pm – 6.30pm, £4.00 per class) • The Play Yard (indoor soft play and 3G pitches) – based in the old Burberry factory run by Valleys kids • Tip Tops Dance & Fitness studio – dance for 3+ years, adults’ classes also available in building. <p>Treorchy</p> <ul style="list-style-type: none"> • Treorchy and Cwmparc boys & girls club – Home of Rhondda Radio, weekly snooker coaching Thursdays 6.00pm -8.30pm, Football teams – under 5s, under 7’s, under 9’s, under 11’s, under 12’s, Under 13’s, under 14’s, under16’s, under 18’s. Pool tables, snooker tables, darts board, table tennis, sports hall, basketball, netball, football, hall available for private hire. • Brownies and Girl guides is available in Treorchy St Matthews church weekly. • Treorchy RFC – Treorchy rugby team, with a youth team, mini and junior teams. The clubhouse has been refurbished and is available to hire for events. • Rhondda Netball (based in schools) • Treorci Library Youth Centre • Treorchy Library Toddler Group and Story Time • Upper Rhondda Cricket Club: All Stars and Dynamos based in Ystradfechan Field <p>Cwmparc</p> <ul style="list-style-type: none"> • Cwmparc Family Hub (previously Alison House now managed by Cwmparc Community Organisation) hosts: Beavers / Brownies / card making group / Rainbows Also run: football academy / junior running club / knitting and crochet / stage school • Parc Hall: gym / yoga / circuits / kick boxing etc • Parc Primary Kindercare • Saint George's Parish Church - Wednesday 2pm fortnightly older person group meet / Card making Tuesdays 1.30pm / Gospel Hall youth & bowls / Scouts |

Analysing what are the main gaps in provision?







| Tracking changes in the area | | | |
|------------------------------|------|------------------|------|
| Section | What | What has changed | Date |
| | | | |
| | | | |
| | | | |
| | | | |
| | | | |

