

## Quotes from the community

*“Treherbert has something of a ‘do it yourself’ mentality born of relative geographic isolation. A vision to become Wales’ first ‘Forest Town’, the recently re-formed chamber of trade, and nearby developments including Zip World and the Rhondda Tunnel offer exciting opportunities.” – The Bevan Foundation 2020*

*“Many years ago, when I was a student in London I visited the Geology Museum. I was astounded to see two pictures of Trehebert there. One of Penpych and the other the SSSI site of Cwmsaebren basin. Why was this landscape, which I had taken so much for granted and now made me homesick, being given such prominence? What was dawning on me was that the Upper Rhondda may be economically poor, but it is environmentally very rich. Now in 2021 we have the opportunity to address our poverty by using the environmental capital surrounding us for the benefit of the residents of the Upper Rhondda. By managing the forest that encircles us the Skyline project situated in the Old Library plans to harvest the forest to build sustainable affordable housing. It also intends to produce food in poly tunnels heated by biochar (from the forest) and electricity from hydroelectric schemes. It is proposed to create a nature reserve in Cwmsaebren. Before long a Peat Bog Study Centre will open on the top of the Rhigos encouraging carbon sequestration and helping alleviate flooding further down the valley.*

*The development of tourism is a must. The Zip wire is almost complete. But we need to improve our network of paths in the forest for the benefit of walkers and cyclists. Both local residents and visitors will benefit from signposting which must be a top priority. The Rhondda Tunnel must be given the go ahead to link us to one of the most popular mountain biking venues in Britain.*

*I think the Upper Rhondda is at the moment probably one of the most exciting places to live. We still have a good community spirit, and we have the potential to create many local jobs. We also aim to be one of the first carbon neutral communities in the world and one cannot have a higher ambition than that! – Cllr Geraint Davies*

# Community Profile – Treherbert, Blaencwm, Blaenrhondda, Tynewydd and Penyreglyn

## Overview

Situated at the head of the Rhondda Fawr valley in the county borough of Rhondda Cynon Taf – these are former industrial coal mining villages which were at their economic peak between 1850 and 1920. Treherbert is the upper most community of the Rhondda Fawr and encompasses the districts of Blaencwm, Blaenrhondda, Tynewydd and Pen-yr-englyn.

Blaen-y-Cwm and Blaenrhondda are at the head the Rhondda Fawr valley. With Treherbert, Tynewydd, Blaencwm, Blaenrhondda and Pen-yr-englyn it is part of a community of Treherbert. Rhondda Fawr is the larger of the Rhondda Valleys.

The entire upper Rhondda has beautiful outdoor green spaces and although each village is its own community as they mostly run straight into each other communities are well linked. Treherbert has an active busy high street. The very close proximity of towns and village in the Rhondda Fawr mean that people from Treherbert to Blaencwm drive through / visit Treorchy which is the main hub of the Upper Rhondda on almost a daily basis.

The Welcome to our Woods, Create Your Space Programme is a long-term Lottery funded placed based approach to supporting the community improve health and wellbeing and the local economy through better use of the natural assets in the Upper Rhondda working to connect villages - the activities taking place in the area, especially the Welcome to Our Woods activities are connecting people living in the local villages.

Mural at Treherbert train station



Pen Pych Mountain



## Section 1 - Community Groups, Activity + Key Buildings

<b>Blaencwm</b>			
<b>Community Building</b>	<b>Activities they run</b>	<b>Other groups based there</b>	<b>Other Groups with no physical base</b>
Blaencwm Community Centre	Polling Station / Monthly Bingo Club (closed rest of month)	Zumba Class <a href="https://www.facebook.com/yesyoucanwales">https://www.facebook.com/yesyoucanwales</a>	- Welcome to our Woods run some activities around Pen Pych area
Hendrewen Hotel	Ladies Darts Team / Weekly quiz night / Christmas events	None	
<b>Blaenrhondda</b>			
<b>Community Building</b>	<b>Activities they run</b>	<b>Other groups based there</b>	<b>Other Groups with no physical base</b>
Blaenrhondda Top Club	Bingo Night / party hire / events and performers	CISWO Social Group Blaenrhondda Branch OAP Indoor Bowls Group	- Blaenrhondda FC play on field in main parc next to Bowls pavilion
Blaenrhondda Bowls Club Pavilion	Bowls Team pre and post matches	None	
<b>Tynewydd</b>			
<b>- Community Building</b>	<b>Activities they run</b>	<b>Other groups based there</b>	<b>Other Groups with no physical base</b>
The Bricks Social Club			<ul style="list-style-type: none"> <li>- <b>Upper Rhondda Angling Association</b> have a fish farm and on site they have several sheds and seating areas that provide a communal meeting and socialising environment for members.</li> <li>- <b>Rhondda Rotary Club</b> (various activities across the valley)</li> </ul>
<b>Treherbert RFC</b> Clubhouse	Large licenced premises / pre- and post-game hospitality / weddings / funerals / party hire / Live performers weekly  Rugby team have seniors / seconds and minis sections and a pitch and training pitch	Treherbert and District Gardening Society hold their Committee Meetings and Society Talks here.	
<b>Blaen-y-cwm Chapel</b>	Pay as you feel café / Mother + Toddler / Coffee Morning / Food Bank / <b>Community Garden</b> / separate Arts Surgery building /	<ul style="list-style-type: none"> <li>- Welcome to our Woods use as one of their bases.</li> <li>- Spectacle Theatre run activities here for young people</li> </ul>	

	Sunday school / community concerts and events / Cooking Project		
Arts Surgery	Owned by RHA. 'Mindfulness and peer led support' / Craft and Chat Group	<ul style="list-style-type: none"> <li>- Men's Shed Treorchy are now based here with workshop and other activities.</li> <li>- Gavin Jones (independent furniture maker)</li> </ul>	
St Albans's Road Allotment Site	Run by Treherbert and District Gardening Society 30 lots / allotment stores	<ul style="list-style-type: none"> <li>- Welcome to our Woods have a base here.</li> <li>- Local beekeeper has a base here.</li> <li>- Blaenycwm Chapel grow food here that is used in the 'Pay as you Feel Café'.</li> <li>- Men's Sheds Tynewydd will be carrying out activity here.</li> </ul>	
The Warehouse Church Workshop	Work Search opportunity and health and well-being support		
<b>Treherbert</b>			
<b>Community Building</b>	<b>Activities they run</b>	<b>Other groups based there</b>	<b>Other Groups with no physical base</b>
Treherbert OAP Hall	Bingo / Fetes / party hire / coffee mornings / polling station / armchair aerobics / Tai Chi / Ladies Choir	<ul style="list-style-type: none"> <li>- Slimming World</li> <li>- The Warehouse Church (also have premises on main road to start job club) (2020+)</li> <li>- Zumba</li> </ul>	<ul style="list-style-type: none"> <li>- Bingo Bashers (tenants group based in Glenrhondda Court)</li> <li>- Friends of Ty Ross Nursing Home (group that supports activities in the care home)</li> </ul>
Treherbert Methodist Church	Normal chapel activities / Craft Class / Flower Festival / Brownies	<ul style="list-style-type: none"> <li>- Brownies</li> <li>- WI Treherbert</li> <li>- Welcome to our Woods run Pilates here</li> </ul>	<ul style="list-style-type: none"> <li>- Treherbert Volunteer Gardening Group (look after two spaces in Treherbert with flowers and lights)</li> </ul>
The Old Library	Welcome to our Woods main base. Create your Own Space Project main base. Rhondda Skyline	<ul style="list-style-type: none"> <li>- Citizens Wales (Richard Weaver) supporting actions with Create your Own Space Project</li> </ul>	<ul style="list-style-type: none"> <li>- The Bevan Foundation (see section 14)</li> <li>- Pen y Rhondda Trust (the charity operates to provide support to members of the local</li> </ul>

	('Welcome to our Woods' is working to connect people with woodlands and outdoor areas where they live. We will do this by managing our natural resources with local people focusing on health, well-being and creating sustainable social enterprises to achieve a natural future for the Upper Rhondda Fawr).		community in a variety of ways. These include school assemblies; conservation days and help in the local chapels. The Trust owns a property which is used for volunteers).
Treherbert Boys and Girls Club	BGC regular activities / public gym	<ul style="list-style-type: none"> <li>- Welcome to our Woods have green gym sessions here.</li> <li>- Autism Life Centres (2020+) rent a permanent space at hall to extend base</li> </ul>	<ul style="list-style-type: none"> <li>- Valley of Hope (Supporting homeless Relieving poverty in Ethiopia Prisoners, Ex-Offenders and substance misuse Those who are in need Self Reliant Groups Social Enterprises).</li> <li>- Muddy Boots RCT Walking Group <a href="https://www.facebook.com/groups/1289114787825756">https://www.facebook.com/groups/1289114787825756</a></li> </ul>
Churchfield Allotment Site	40 plots / allotment stores	<ul style="list-style-type: none"> <li>- Autism Life Centres have a plot here</li> </ul>	<ul style="list-style-type: none"> <li>- Selsig Music Theatre Company - Provision of training and participation in music and musical theatre (now meet and rehearse predominantly in Treorchy)</li> </ul>
Treherbert Community Education Centre	Very large building, derelict except for Cylch Meithrin Tynewydd (registered Charity) as tenants.		
Treherbert Bowls Club Pavilion	Pre- and post-match hospitality / coffee mornings / games mornings / social group	<ul style="list-style-type: none"> <li>- Friends Walking Group</li> </ul>	
Railway Canteen	Members club open on weekends	-	
Treherbert Silver Band Hall	Silver band rehearsals and meetings	<ul style="list-style-type: none"> <li>- Medium / Spiritualist</li> <li>- Avant Cymru</li> </ul>	
Ninian Stuart Conservative Club	Pool and Darts teams / licenced premises / party hire	<ul style="list-style-type: none"> <li>- Royal Antediluvian Order of the Buffaloes</li> </ul>	
Dunraven Pub	Licenced premises / party hire	<ul style="list-style-type: none"> <li>- WI Treherbert</li> <li>- British Legion Group</li> </ul>	
<b>Penyreglyn</b>			
<b>Community Building</b>	<b>Activities they run</b>	<b>Other groups based there</b>	<b>Other Groups with no physical base</b>
Valleys Kids Penyreglyn Project	Youth activities / Mental Health Support Group / After School Group / Middle Group / Youth Group / Pre-school Group, mums and toddlers / Drama Group / Wednesday ladies' group	<ul style="list-style-type: none"> <li>- Treherbert Quilting Club</li> <li>- Photoshop Digital Group</li> </ul>	

Carmel Chapel	Normal chapel activities / coffee morning / choir and band concerts		
Baglan Hotel	Licenced premises and food takeaway / popular Sunday lunch venue / Sunday league football team	-	

**Deprivation Ranking - WIMD 2014 (where 1 is most deprived and 1909 is least)**

WIMD	Income	Employment	Health	Education	Access to Services	Community Safety	Physical Environment	Housing
499	535	354	186	937	1,089	964	1,444	712
164	141	30	356	401	754	674	1,421	1,260
153	164	73	287	393	259	661	964	419
414	356	299	585	518	1,225	526	589	487

	UK Office of National Statistics, 2011 Census	Estimated 2020	2021
Population	5730 0-17 years 1,142 18-64 years 3,246 65+ years 1,126	5514 <a href="https://www.citypopulation.de/php/uk-wales.php?cityid=W38000056">https://www.citypopulation.de/php/uk-wales.php?cityid=W38000056</a>	

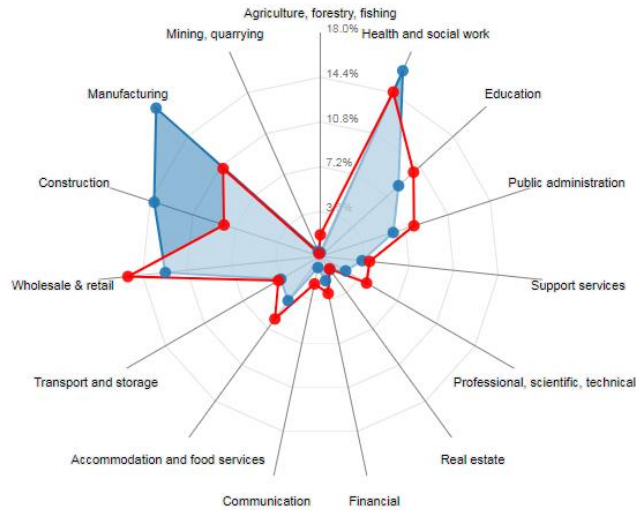
	Welsh Average	2019	2021
Population		Now estimated to be 5514 - <a href="https://www.citypopulation.de/php/uk-wales.php?cityid=W38000056">https://www.citypopulation.de/php/uk-wales.php?cityid=W38000056</a>	
Children in poverty	20% of children live in poverty	34%	
Central heating	2% of households have no central heating	2%	
Crime Rates	Overall crime rate is lower than Welsh average. There were 523 reported crimes between 2018 and 2019, 94.5 per 1000 population.		
Illness	23% of people have a life limiting illness	32%	
Qualifications	26% of people across Wales have no qualifications	41%	
Car ownership	23% of people across Wales	37%	
Ethnicity	93% of people in Wales are White British	97.9%	
Born in Wales	72.7% of people were born in Wales	90.2%	
Welsh language	75% of population cannot speak Welsh with only 12.5% able to speak and write Welsh		
Benefits	Of people out of work, 18.9% are receiving workless benefits and 5.1% people are receiving looking for work benefits. There are around 270 people claiming Universal Credit.		
Deprivation Rate	2765 people are living in the most deprived 20% of areas in Wales, so 48.5% of the population		
Out of work households	17.8% of children live in out of work households	34.5%	
Living in poverty	20% of people are classed as living in poverty	35.7%	
Average household income		£22,600	
Unpaid care		813 people providing unpaid care (14.2%)	
Air Quality and Green Spaces	41% of population live in flood risk area	The air quality score is 25% better than Welsh average and have access to green	

		space and public parks and gardens more readily than Welsh average.  81% of population live in flood risk area	
<b>Mental Health</b>		7.8% of population are receiving mental health benefits (275 people) this does not consider diagnosed mental health conditions who do not receive benefits / 21% of population have GP recognised mental health condition.	
<b>Debt</b>		Personal debt and residential mortgage debt per head are significantly lower than Welsh average	

<b>2</b>	<b>Employment &amp; Local Economy</b>	<p>42.5% of population are economically active compared with 65.8% Welsh average, with 30.6% employed full time, 12.2% employed part time and 5.9% self-employed (around 240 people).</p> <p>The largest employment sector is manufacturing 18% of the 2040 people in employment), then health &amp; social care 16% of the 2040 people in employment and construction 14% of the 2040 people in employment.</p> <p>Roughly 1/3 of working population work in the Rhondda Valleys with 2/3 travelling to Cardiff, Pontypridd and over the Rhigos to Neath, Swansea and Cynon valleys. UK Office of National Statistics, (Census, 2011)</p> <p>In the area, there are on average 33.78 claimants per job, significantly higher than the 3.86 Welsh average and the jobs available in area are in the majority, manufacturing, education and health.</p>	<b>3</b>	<b>Health Provision</b>	<p><b>In area</b></p> <ul style="list-style-type: none"> <li>• GP Surgery in Tynewydd and 3 chemists</li> </ul> <p>Many of the population use GP surgery in Ynyswen – Forest View Surgery (1 mile outside Treherbert District)</p> <p><b>Closest hospitals</b> Closest A&amp;E Royal Glam in Llantrisant (15 miles away) <i>under threat of closure, local campaign in place</i> Llwynypia minor injuries appointment only (6 miles away)</p> <p><b>Dentists and opticians</b> The closest dentist is in Treorchy (max distance of 3.37 miles) with great bus and train links There is an optician in area in Treherbert and several more 2 miles down the valley in Treorchy.</p> <p>There is a nursing home in Treherbert (Ty Ross). In Treorchy (1.5 miles away) there are another 2 nursing homes and Ysbyty George Thomas (health and wellbeing centre for older person’s mental health)</p>
----------	---------------------------------------	--	----------	-------------------------	---



### Treherbert - Treherbert



32% of people have a limiting long-term illness in Treherbert compared with 23% across Wales (Census, 2011). The average life expectancy is 75 compared to 77 across RCT and 78 across wales. More importantly, healthy life expectancy is 61 compared with 68 Welsh average. 75% of the population are living in health deprivation hotspots compared with 19.3% Welsh average and 32% of population have limiting long-term illness compared to 22.7% Welsh average.

Percentage of usual resident population (from Census 2011).  
 Social grade based on percentage of usual resident population aged 16 – 64 (from Census 2011).  
 Social grade 1: higher and intermediate managerial/administrative/professional occupations.  
 Social grade 2: supervisory, clerical and junior managerial/administrative/professional occupations.  
 Social grade 3: skilled manual occupations.  
 Social grade 4: semi-skilled and unskilled manual occupations; unemployed and lowest grade occupations.

### Treherbert - Treherbert





4	<b>Transport Connections</b>	<p>37% of households (960) have no car compared with 23% across Wales (Census, 2011) – and 43.4% of pensioner households have no vehicle, however there are excellent bus and train links.</p> <p>However, the travel time to key services (walking or public transport) are significantly lower than Welsh average across most categories and so population has good access to key services.</p> <p><b>Travel Times to Key Services</b>  Post Office – 8 mins  Library – 37 mins  GP – 14 mins  Pharmacy – 12 mins  Primary School – 11.7 mins  Secondary School – 43.7 mins  Food Shop – 8 mins  Leisure Centre – 75.5 mins</p> <p><b>Roads</b>  The main road in the northerly direction out of Treherbert is the A4061 Rhigos Mountain Road towards Hirwaun and the A465 Heads of the Valleys Road. It was built as a relief project for unemployed miners and opened in November 1929. It now serves as main access road for those working in Cynon, Neath and Swansea valleys.</p> <p><b>Rail</b>  Treherbert railway station is the last stop on the Transport for Wales Treherbert line, which runs from the capital city, Cardiff. There are trains every 30 minutes, 7 days a week.  Prior to the Dr Beeching cuts in the 1960s the railway line continued from Treherbert through Tynewydd to Blaencwm. From here it turned left at Pen Pych into Blaencwm. In Blaencwm, the line descended into a single-track tunnel under Mynydd Blaengwynfi, emerging in the village of Blaengwynfi in the nearby Afan valley. The journey took approximately 8 minutes.</p> <p><b>Buses</b>  A bus service runs every 15 minutes through Treherbert and travels all the way to the top of Blaencwm and Blaenrhondda. Service runs from 06.00 – 23.00.</p>
5	<b>Schools – primary, secondary, Welsh, special needs, nurseries (including Cylchoedd</b>	<p><b>2 schools in area (primary)</b>  <b>0 secondary schools in area</b>  <b>Average travel time to secondary school = 21 minutes</b></p>

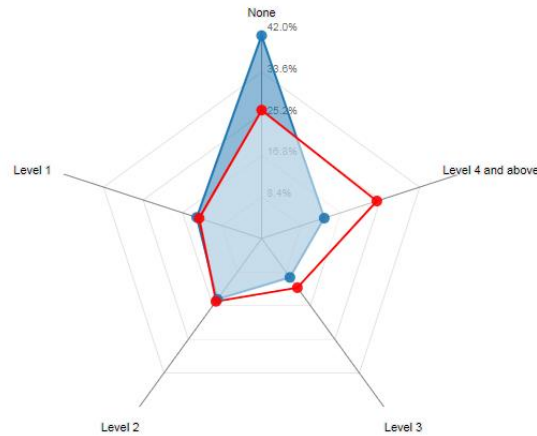
<p><b>Meithrin), childcare providers – number of pupils in each, current Estyn ratings.</b></p>	<p><b>Average travel time to primary school = 3 minutes</b>  <b>432 school places</b></p> <p><b>In area</b></p> <p><b>Blaencwm:</b> None</p> <p><b>Blaenrhondda:</b></p> <ul style="list-style-type: none"> <li>Pen Pych Community Primary School – Estyn rating ‘Good’ (2018) - 201 pupils, 33 of which attend full time nursery.</li> </ul> <p><b>Tynewydd:</b> None</p> <p><b>Treherbert:</b> None</p> <p><b>Penynglyn:</b></p> <ul style="list-style-type: none"> <li>Penynglyn Primary School – Estyn rating (2015) – Adequate / 264 pupils, 24 of which attend full time nursery. Community allotment, garden area being developed with support of the fund.</li> </ul> <p><b>Nearest Welsh Language Schools</b></p> <ul style="list-style-type: none"> <li>Ysgol Gyfun Ynyswen (infant and junior) – Estyn rating (2013) – Adequate (1 mile out of Treherbert district) 273 pupils, 44 of which attend full time nursery.</li> <li>Ysgol Gyfun Cwm Rhondda (secondary) – based in Cymer, Porth - a max distance of 10.2 miles with school buses.</li> </ul> <p><b>Nearest English Language Secondary School</b></p> <ul style="list-style-type: none"> <li>Treorchy Comprehensive – a max distance of 4 miles with school buses and trains for transport.</li> </ul> <p><b>Nearest Special educational school</b></p> <ul style="list-style-type: none"> <li>Ysgol Hen Felin, Ystrad which is 4.2 miles from Treherbert.</li> </ul> <p><b>Nearest Childcare providers</b></p> <ul style="list-style-type: none"> <li>Cylch Meithrin Tynewydd (based in old Treherbert Youth Club – rest of building is empty)</li> </ul> <p>Heavenly Day Nursery - Treorchy is the closet childcare provision, 2.1 miles away from Treherbert – places for 34 children, open from 07.30 – 18.00 Mon-Fri.</p>
---	---

Can find childminders through care.com website, there are 3 childminding services located in Treherbert, details of childminder are given once an account has been set up. <https://www.care.com/en-gb/join-now?verticalId=childCare>

There is no Flying Start provision in this area.

41% of people have no qualifications in Treherbert compared with 26% across Wales, (Census, 2011) and 78.6% of 18-19-year olds are not in Higher education compared with 66.1% Welsh average.

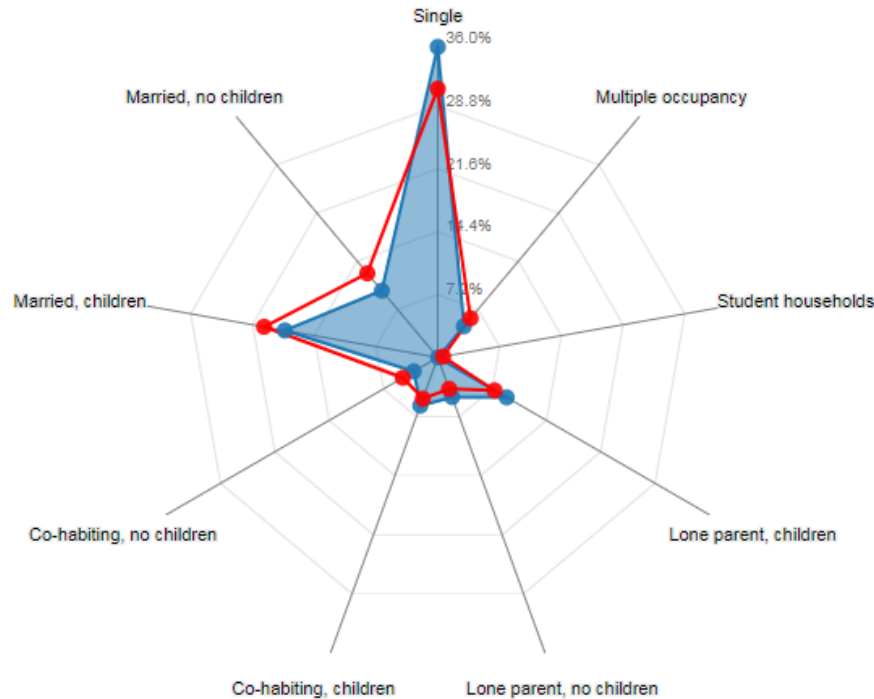
Treherbert - Treherbert



6	<b>Politics</b>	<p>CLLr Geraint Davies – Plaid Cymru / CLLr Will Jones - Independent</p> <p>AM – Leanne Wood – Plaid Cymru</p> <p>MP – Chris Bryant – Welsh Labour</p> <p>Council – RCT CBC – Labour</p> <p>Town / Community Council – None</p>	7	<b>Derelict buildings and areas of land that are problematic or affect people’s view of the community?</b>	<p>There have been several groups linked to disused paddling pool which community would like to see re-opened.</p> <p>The old Con Club (Con Club moved to new location as major issues with building – a Church is now in situ but not open to the public and building is in state of disrepair)</p> <p>Toilets in Treherbert Park</p>
8	<b>Housing</b>	<p>Make up of properties:</p> <ul style="list-style-type: none"> <li>• Detached – 111 (3.9%) Welsh average = 27.7%</li> <li>• Semi Detached – 366 (12.9%) Welsh average = 31%</li> <li>• Terraced – 2098 (74%) Welsh average = 27.8%</li> <li>• Purpose Built Flats – 195 (6.9%) Welsh average = 9.6%</li> <li>• Flats in converted houses or buildings – 37 (1.3%) Welsh average = 2.4%</li> </ul> <p>Blaencwm/Blaenrhondda / Tynewydd and Treherbert are almost entirely terraced housing built in the late 19<sup>th</sup> century with a small number of new build / detached properties. Penyreglyn is a mixture of terraced housing and purpose-built social housing (that used to be known as The Ranch).</p> <p>There are small blocks of flats dotted around Treherbert and Penyreglyn (no more than 3 stories with 10 flats in each. There are a few purpose-built retirement blocks.</p> <ul style="list-style-type: none"> <li>• Owner occupied – 1738 (67.5%) Welsh average = 67.8%</li> <li>• Social rented – 368 (14.3%) Welsh average = 16.5%</li> <li>• Private rented – 380 (14.8%) Welsh average = 15.8%</li> </ul> <p>Average house price is £66,490 – 61.2% of properties were built before 1900 but 60 properties have been built since 2000 which is slightly higher than Welsh average.</p> <ul style="list-style-type: none"> <li>• Trivallis and Rhondda Housing Association are the social landlords serving the area</li> <li>• Ty Ross is the only nursing home in Treherbert</li> <li>• Treherbert Children’s home</li> </ul> <p>Households are made up as follows:</p> <ul style="list-style-type: none"> <li>• Pensioner – 685 (26.6% compared to 22.9% Welsh average)</li> </ul>			

- One person – 470 (18.2% compared to 17.1% Welsh average)
- Lone Parent with dependent children – 235 (33.4% compared to 26.8% Welsh average)
- Married – 715 (27.8% compared to 32.8% Welsh average)
- Cohabiting – 235 (9.1% compared to 9.7% Welsh average)

### Treherbert - Treherbert



9	<b>Places of worship (description, denomination, how buildings used)</b>	<p>47.6% identify as having no religion compared with 32% Welsh average. 43.4% of remaining people (3,090) identify as Christian with 10% Muslim or Sikh.</p> <p><b>Blaencwm</b> None</p> <p><b>Blaenrhondda</b> None</p>	10	<b>Tourism</b>	<p>Treherbert: Welcome to Our Woods are carrying out practical work and community engagement to develop woodland area behind Treherbert train station with community hydro and Pixie bridge. Their building The Old Library Social Forestry Hub on main road will give out information on area to visitors and locals.</p> <p>At the very top of Blaenrhondda (land adjoining Rhigos mountain / NRW managed land and Pen y Cymoedd Wind Farm), there is a very large area of land now owned by</p>
---	--	---	----	----------------	--

		<p><b>Tynewydd</b></p> <ul style="list-style-type: none"> <li>- <b>Blaen-y-cwm Chapel</b> - Welsh Baptist</li> </ul> <p><b>Treherbert</b></p> <ul style="list-style-type: none"> <li>- Treherbert Methodist Church</li> <li>- Trinity Gospel Hall – Sunday service only</li> </ul> <p><b>Penyreglyn</b></p> <ul style="list-style-type: none"> <li>- Carmel Chapel / Welsh Independent</li> </ul> <p>For more information on activities based in all these buildings, see Section 1</p>		<p>private owner - this was once ‘Cowboy Town’ and there have been discussions around developing camping, activities, camping pods etc here as well as housing development over the years.</p> <p>Penpych mountain is a tourist attraction with many people visiting to climb to the top, this is between Blaenrhondda and Blaencwm and Penpych Woodland Park is managed by NRW.</p> <p>At the very top of Blaencwm is disused Rhondda Tunnel joining Blaencwm and Blaengwynfi in the Afan Valley. There is an active campaign group The Rhondda Tunnel Society working to re-open this. If re-opened it would be second longest cycling tunnel in the world and be a major tourist attraction.</p> <p>There are 5 Air BNB properties in Blaencwm and Blaenrhondda and a sought-after luxury B&amp;B in Tynewydd.</p>
<b>11</b>	<b>Local businesses &amp; shops</b>	<p><b>Blaencwm</b></p> <p>Old School Engineering The Hendrewen Hotel (open 3 days per week) Funeral Director Air BnB properties</p> <p><b>Tynewydd</b></p> <p>General store (including post office counter) Bits and Bobs (including fruit and veg) Butchers Sweet Shop Hairdresser Charity Shop Takeaway</p>	<p><b>Blaenrhondda</b></p> <p>Post Office</p> <p><b>Treherbert</b></p> <p>Post Office General Store 5 x Take Away Florist Funeral Directors 2 x Gift Shops Charity Shop</p>	

		<p>Builders Yard Bakery Funeral directors</p> <p><b>Penyreglyn</b> General store</p> <p>The closest supermarkets are Lidl and Co-Op in Treorchy / Asda in Tonypanyd / Tesco in Aberdare</p> <p>A fishmonger and veg van visit all villages once a week. There is a weekly meat van in Treherbert.</p> <p>Treherbert now has a chamber of trade 'We are Treherbert'</p>	<p>6 x Spar / General Stores Greengrocer – Paul's bakery, butchers and café The Old Library Social Forestry Hub (WTOW) 7 x Hairdresser Bits and Bobs Tattoo Shop Croeso Café</p>
12	<p><b>Leisure premises, pubs, clubs etc</b></p>	<p><b>Blaencwm</b></p> <ul style="list-style-type: none"> <li>- Hendrewen Hotel (open 3 days a week) / popular Sunday Lunch venue</li> </ul> <p><b>Blaenrhondda</b></p> <ul style="list-style-type: none"> <li>- Top Club</li> </ul> <p><b>Tynewydd</b></p> <ul style="list-style-type: none"> <li>- Tynewydd Labour (The Bricks)</li> <li>- The Wyndham</li> <li>- Treherbert RFC</li> </ul> <p><b>Treherbert</b></p> <ul style="list-style-type: none"> <li>- The Bute</li> <li>- Ninian Stuart Conservative and Unionist Club</li> <li>- The Dunraven Hotel</li> </ul> <p><b>Penyreglyn</b></p> <ul style="list-style-type: none"> <li>- Baglan Hotel</li> <li>- New Inn</li> </ul>	



		For more information on activities based in all these buildings, see Section 1
13	External services brought into the area.	<ul style="list-style-type: none"> <li>- Mobile Library visits Treherbert weekly</li> <li>- Meat Van visits weekly</li> <li>- Slimming World (in Treherbert OAP Hall)</li> </ul> <p><b>Other organisations that regularly deliver activities / support in area:</b> Music in Hospitals and Care / Shelter Cymru / Manage Money Wales / SNAP Cymru</p> <p>The Bevan Foundation are working closely with the community on a project looking at the potential to grow the everyday economy of Treherbert. If you would like to know more, you can contact <a href="mailto:lloyd.jones@bevanfoundation.org">lloyd.jones@bevanfoundation.org</a>- <a href="#">The Everyday Economy in three valleys towns   Bevan Foundation</a></p>
14	What's likely to come up? What might change?	<ul style="list-style-type: none"> <li>- Development of tourism in area with Tunnel, Zip World and increase in B&amp;B's / Air BnB</li> </ul>

15	<p><b>Greenspaces</b></p> <p><b>Parks &amp; green spaces (and Green Flag Awards where applicable)</b></p> <p><b>Footpaths and Active Travel networks</b></p>	<p><b>Blaencwm</b></p> <p>Penpych Woodland Area NRW Car Park and Paths (CF42 5EB) – Penpych mountain has tabletop formation and is a popular walking / visitor destination. Penpych mountain also boasts 2 large waterfalls and nearby an Iron Age stone hut circle.</p> <p>Blaencwm is a popular walking attraction for local people and visitors and most weekends tourists are seen around the village and mountains walking the trails.</p> <p>One small infant playground and one larger with play equipment, grassed play area and skate ramp</p> <p>Informal allotment plots privately owned around village</p>
----	--	--

<p><b>Sports facilities &amp; Clubs</b></p>	
<p><b>Playgrounds</b></p>	
<p><b>Playing fields</b></p>	
<p><b>Heritage sites</b></p>	
<p><b>Allotments</b></p>	<p><b>Blaenrhondda</b>          Blaenrhondda Park is a large green space with play area and bowls and football provision (CF42 5SF). There is an attractive community green on the Brynhellan Estate. People use the Fernhill site for walking, running and cycling though this area is now under private ownership.</p> <p><b>Tynewydd</b>          Mainly residential with no play areas or parks but there is a large green space and footpath used for dog walking behind the main road. Blaen-y-cwm Chapel has a small community garden.          St Albans Road Tynewydd Allotments</p> <p><b>Treherbert</b>          Treherbert Park – MUGA / play park / tennis court / bowls club and abandoned swimming pool          WTOW have community space in woods used for outdoor cooking / exercise / bush craft etc          One play equipment park in Treherbert Park          MUGA in park</p> <p>Large football pitch</p> <p>Churchfield Allotment Society (20 plots)</p>



**16 Other Community Facilities (including postcodes)**  
**Include:**

**Pharmacies**  
**Libraries**  
**Petrol stations**

**Blaencwm** (entirely housing apart from Pub/ small unused community centre and 2 play areas)

**Blaenrhondda** (entirely housing apart from Top Club / Blaenrhondda Park where play area, bowls and FC are based)

**Tynewydd** (no play areas, a couple of community use buildings and several pubs and shops)  
 Pharmacy  
 Post Office

**Treherbert** (lots of shops and pubs and a variety of community buildings and large park)  
 Mobile library visits weekly  
 Pubs and Shops

**Treherbert Boys and Girls Club**

**Penyreglyn** (mostly housing, some shops and pubs and large playing fields)

Community Recycling Centre in Tynewydd and a newly opened ‘The Shed at Treherbert’ – mission “to reduce the amount of reusable items being thrown away and make them available for people to buy whilst creating a safe environment for volunteers to reduce social isolation and provide a pathway back into work.” The Shed gives residents the opportunity to purchase items left at recycling centre that volunteers and employees work to clean and restore.

➤ There are no libraries, the closest is Treorchy (2 miles away) though a Mobile Library visits once per week

		<ul style="list-style-type: none"> <li>➤ There are no petrol stations, the closest is in Pentre 4 miles away</li> <li>➤ There are two mechanic garages for servicing and MOTs</li> <li>➤ There are no Council run community buildings or centres remaining open</li> <li>➤ PACT meetings are held at the two primary schools.</li> </ul>
17	<p><b>Leisure facilities and activities specifically for Children &amp; Young People</b></p>	<p><b>Blaencwm</b></p> <ul style="list-style-type: none"> <li>• Park and small skate ramp and a small play area for infants further up the village</li> </ul> <p><b>Blaenrhondda</b></p> <ul style="list-style-type: none"> <li>• Football green / Bowls Green and play park all on one site</li> </ul> <p><b>Tynewydd</b></p> <ul style="list-style-type: none"> <li>• Treherbert RFC Mini Devils</li> <li>• Blaen-y-cwm Chapel Sunday school</li> </ul> <p><b>Treherbert</b></p> <ul style="list-style-type: none"> <li>• Brownies</li> <li>• Welcome to our Woods</li> <li>• Treherbert Bowls Club</li> <li>• Treherbert Boys and Girls Club</li> <li>• Treherbert and District band</li> <li>• Play park including MUGA for football and basketball</li> </ul> <p><b>Penyreglyn</b></p> <ul style="list-style-type: none"> <li>• Valleys Kids – Penyreglyn project run pre-school / after school and youth activities</li> </ul> <p>34% of children are living in poverty in Treherbert compared with 20% across Wales (Census, 2011).</p>

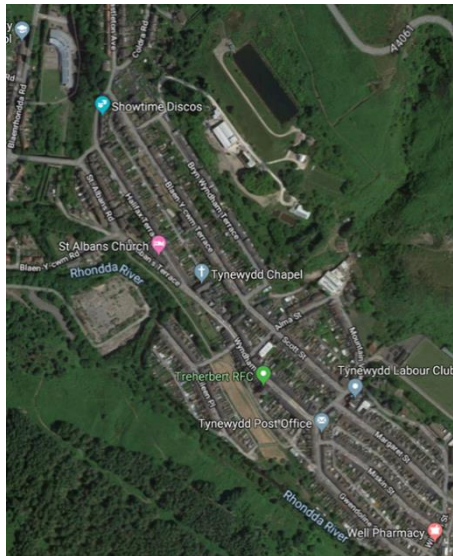
## Analysing what are the main gaps in provision?

- Perceived lack of activities for young people (some young people would like to see Boxing Gym)
- Community members suggested they would like to see a Bowling Alley in the community – a large scale one to bring people to the area (like the one in Nantgarw).
- Range of activities are limited
- There are no shops in Blaencwm or Blaenrhondda and residents feel something is needed further up the valley.
- People feel you have to use the internet to find out what is happening, and groups and events should communicate in other ways.
- There were issues of littering and damage in Treherbert park and MUGA areas and the community are working with WTOW to investigate ways of dealing with this.
- There are no banks or visiting banks in Treherbert
- People often visit Aberdare as closest large town and would like to see a bus connection.











Tracking changes in the area

Section	What	What has changed	Date
1	Community Buildings / Groups	2 new community groups have moved into area	2020
14	Local Shops	A Chamber of Trade was established with support of a PyC grant	2020